

# Noteworthy & New:

## Dentsply Caulk

SureFil® SDR™ flow Posterior Bulk Fill Flowable Base allows you to place posterior composites in up to 40% less time. SureFil® SDR™ flow material is the first ever bulk fill flowable base. The new stress decreasing resin (SDR™) system allows for bulk placements up to 4mm with a 20 second cure time. All the benefits that are desired in a flowable composite; stress absorption and excellent cavity adaptation, now with the added benefit of bulk filling. Incremental layering is a thing of the past with SureFil®SDR™ flow material. SureFil® SDR™ flow material can be placed up to the dentin enamel junction or in 4mm increments. The material offers maximum flexibility by allowing you to cap the restorative with any methacrylate based universal composite to provide the desired esthetics, wear resistance and strength needed on occlusal surfaces. SureFil® SDR™ flow Material...the first ever bulk fill flowable base. For more information, visit [www.surefilcdrflow.com](http://www.surefilcdrflow.com), or ask your Nashville Dental Account Representative.



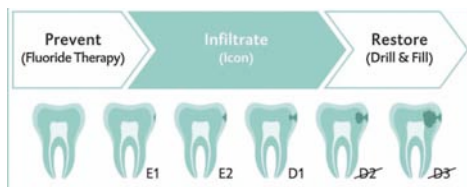
- 61C000 – SureFil® SDR™ flow material Introductory Kit .....\$115.99
- 61C001 - SureFil® SDR™ flow material Compula® Tips Refill.....\$66.49

## Icon - DMG America

No more “wait and see” . . . treat incipient caries upon discovery!

- Icon provides an innovative, never-before-seen option for treatment of smooth surface and proximal carious lesions.
- Instead of taking a “wait and see” approach, Icon can arrest the progress of early enamel lesions up to the first third of dentin – in one simple procedure, without unnecessary loss of healthy tooth structure!
- Enables immediate treatment of lesions not yet advanced enough for restoration; ends “wait and see” approach
- Arrests caries progress without unnecessary loss of healthy tooth structure
- Cosmetic treatment of cariogenic white spots in one patient visit
- No drilling or anesthesia required, for greater patient comfort
- Patients with poor compliance can be treated earlier
- Prolonged life expectancy of tooth
- Not just minimally invasive dentistry. . . micro-invasive!

The first treatment to bridge the gap between prevention and restoration. . .



**Icon Smooth Surface - Each Patient Pack treats 2-3 lesions.**

Includes: 1-0.30ml Syringe Icon-Etch, 1-0.45ml Syringe Icon-Dry, 1-0.45ml Syringe Icon-Infiltrant, 6 Smooth Surface Tips

220402 - Mini-Kit – 2 Patient Packs. . . . . \$149.99

220403 - Cube – 7 Patient Packs . . . . . \$471.99

**Icon Proximal - Each Patient Pack treats 2 lesions.**

Includes: 1-0.30ml Syringe Icon-Etch, 1-0.45ml Syringe Icon-Dry, 1-0.45ml Syringe Icon-Infiltrant, 6 Proximal Tips, 4 Dental Wedges

220400 - Mini-Kit – 2 Patient Packs. . . . . \$149.99

220401 - Cube – 7 Patient Packs . . . . . \$471.99



### Cosmetically remove white spot lesions in just one visit!

- Icon offers a revolutionary approach to the cosmetic treatment of carious white spot lesions.
- Lesions infiltrated by Icon take on the appearance of the surrounding healthy enamel. This provides a highly esthetic alternative to micro-abrasion and restorative treatments of cariogenic white spots – all in one simple treatment, with no drilling!



Lesions before Icon treatment



After Icon treatment

NOTEWORTHY & NEW

# Noteworthy & New:

## Kerr Hemostasyl

- \* Excellent handling. Non-slumping. Stays in place so only a small amount of material is required.
- \* Safe and effective. 15% aluminum chloride paste is highly effective at controlling bleeding without staining or discoloring surrounding tissue, or risking possible cell damage.
- \* Contrasting color. Bright turquoise blue color offers sharp contrast with soft/hard tissue to easily see the product and facilitate cleanup.
- \* Easy application. 2 g syringe with angled tip for easy access and precise placement.

Hemostasyl™ stops bleeding and controls fluids without the chance of staining common to other hemostatic agents, so there is no compromise to esthetics. Excellent handling properties make it easy to place for Class V composite restorations, cementation, and scaling in perio cases. And Hemostasyl adheres well to tissue for a more efficient, economical use of material. So when moderate bleeding occurs and gingival retraction is not required—use Hemostasyl. Your patients will enjoy the pleasant taste.



34722 - Intro Kit (2 syringes and 40 curved tips).....	\$65.89
34723 - Hemostasyl Refill (2 syringes).....	\$42.99
34724 - Hemostasyl Tip Refill .....	\$22.89
Contains: 40 Curved Application Tips	

## Vertise Flow Self-Adhering Composite

A revolutionary new category of composites has emerged.

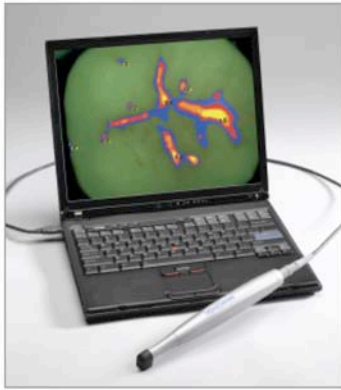
In many practices, a standard of care in posterior composites includes lining the box with a flowable composite to adequately fill all surfaces and angles of the box. This technique is widely used and has helped to achieve a more reliable base for posterior composite success. Recent technology advances in self bonding composites has launched a new generation of products to simplify this technique. One of the newest released products is Vertise™ Flow by Kerr. Vertise™ Flow greatly simplifies the direct restorative procedure for today's time challenged dentist by incorporating a bonding agent into a flowable, which is powered by Kerr's renowned OptiBond® adhesive technology. Kerr's leadership in resin restorative dentistry comes after decades of advancements in composites and expertise in adhesives, both of which come together in Vertise Flow.



### Value Proposition:

- Introducing a revolutionary new product category.
- Reduces procedural chair time, less technique sensitivity, and fewer products to inventory.
- Incorporated OptiBond science translates to a high performance material.

34238B	Vertise Flow Intro Kit.....	\$192.59
34241	A1 Refill (2-2gm syringes).....	\$109.99
34242	A2 Refill (2-2gm syringes).....	\$109.99
34243	A3 Refill (2-2gm syringes).....	\$109.99
34244	A3.5 Refill (2-2gm syringes).....	\$109.99
34245	B1 Refill (2-2gm syringes).....	\$109.99
34246	B2 Refill (2-2gm syringes).....	\$109.99
34247	Universal Opaque Refill (2-2gm syringes).....	\$109.99
34248	XL Refill (2-2gm syringes).....	\$109.99
34249	Translucent Refill (2-2gm syringes).....	\$109.99
34810	Vertise Flow Brushes (100).....	\$56.99



### Spectra™ Caries Detection Aid

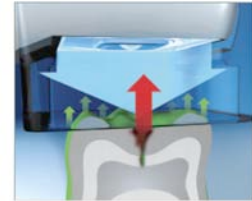
FDA approved and available for sale. Spectra is a lightweight, ergonomic, hand-held digital imaging instrument that aids the dentist in detecting caries visually. Spectra detects tooth decay by measuring increased light-induced fluorescence.

**RELIABILITY.**

SPECTRA enables reliable tooth-by-tooth detection of fissure caries and caries on smooth surfaces directly after a professional cleaning. It's about as fast as an inspection with the mirror.

**ACCURACY.**

More accurate than a tactile examination and quicker than a full series of X-rays, SPECTRA provides a clear red fluorescent image, showing that caries are present. It also shows a clear image of healthy tooth enamel, which comes up as green. After capturing the image with VISIX software (included in the SPECTRA package), you will be able to clearly see the cariogenic bacteria on your monitor. The denser the bacterial colonization, the more intense the red fluorescent signal will be. In contrast to more traditional screening and tactile detection, SPECTRA highlights the carious lesions in different color ranges



Not only can you uncover caries sooner, our software allows you to integrate and save the fluorescent images into every patient's database for more thorough case management. Since the images can be easily stored, the efficacy of treatment can be monitored over time. SPECTRA can also be used during the restorative phase to verify that all caries have been removed.



Fissure caries are often hard to detect, even in an enlarged intraoral camera image. Actual image of examined tooth showing caries in red and healthy enamel in green. Software interpolated image of examined tooth defining the severity of potential caries on a scale of 0-5.

D4000 - Spectra System \$4,425.00

Kit includes: Handpiece, software, disposable sheaths (qty. 50), spacers (qty. 10), handpieceholder (1); USB cable



### Quala Ceramic Spray Glazes

Quala Ceramic Spray Glazes are a simple replacement for the antiquated brush-on technique of applying glaze to zirconia and ceramic dental restorations. Fast, convenient and easy to use, Quala Spray Glazes evenly coat dental restorations 360 degrees at one time, ensuring the thinnest and evenly applied glaze layer possible for dental restorations. Quala Spray Glazes speed the glazing process and improve quality while reducing labor cost and production time.

- Q75010 High Fusing 6oz Can .....\$63.99
- Q75015 Low Fusing 6oz Can .....\$68.89



### Quala's CAD/CAM Intraoral Scanning Spray

Quala's CAD/CAM Intraoral Scanning Spray speeds the important process of CAD/CAM scanning and milling of dental restorations. The spray has a mint flavor and comes with two extension tubes (straight and curved) to allow for easy application anywhere in the oral cavity. The special reflective powders are very small and provide the industry's thinnest final sprayed layers, which provide for hyper-accurate scans and better fitting milled replacement restorations. Can be used intraorally and extraorally.

- Q75020 Spray 2oz .....\$74.99
- Q75025 Spray Tips .....\$7.39

NOTEWORTHY & NEW