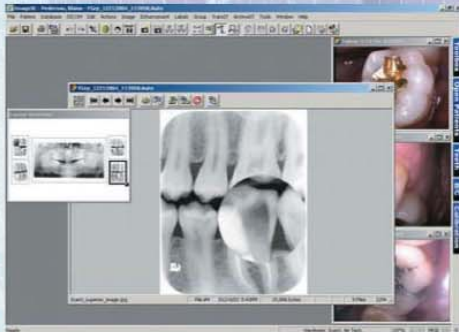
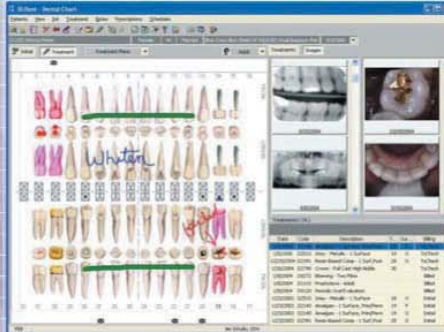


**ImageXL**



Integrate a variety of digital x-ray systems and intraoral cameras – your choice! Increase your diagnostic options and improve your cosmetic imaging capabilities.

**XLChart**



3-D Clinical graphics with realistic hard and soft tissue presentation detail. Automated progress notes for faster, more accurate documentation. Digital document and “inking” technology create the ultimate paperless chart.

**XLTeach**



Educate your patients quickly, and consistently improve treatment acceptance.

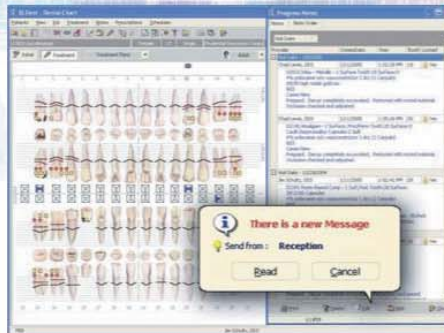
**XLdent**



Easy to use design allows you to create the look and feel you want. All information is within your view. The latest in data base technology offers doctor-friendly analytical management tools.



**XLNotify**



Improve your productivity and your intra-office communications with instant messaging.

**XLSMS**



Communicate with Mobile Text Messaging: Use the power of your mobile phone to confirm patients.

**EXTEND YOUR REACH WITH INTEGRATED SOFTWARE SOLUTIONS**



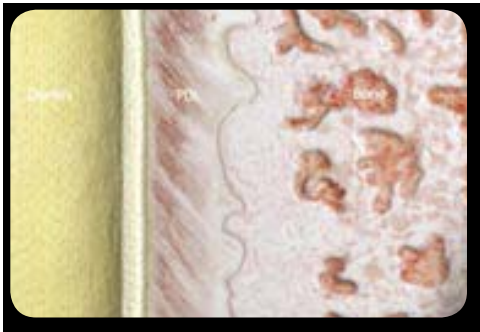
**CHOOSE FROM A COMPLETE SUITE OF DENTAL SOFTWARE PRODUCTS**

call **1.800.328.2925** or visit **www.xldent.com**  
279 North Medina Street • PO Box 1000 • Loretto, MN 55357-1000



*“Celebrating over 34 years serving dentistry”*

# XLTeach™



## INCRECIBLE ANIMATION

### DELIVERS YOUR MESSAGE

- Quickly
- Consistently
- Clearly
- Energetically

### PROMOTES

- High-Tech image
- Treatment acceptance
- Increased productivity
- Improved profitability

### INCREASED PROFITABILITY

Informed patients accept proposed treatment twice as often as an uninformed patient, which leads to an increase in revenue for your practice.

### INCREASED PRODUCTIVITY

XLTeach eliminates the need to repeat the treatment explanations over and over again, and it frees you and your staff to perform more productive tasks.

### REASONABLY PRICED

- 1/3 the cost of comparable patient education software.
- XLTeach is the only affordable high quality solution for your patient education needs.

- Finally your patients can understand things the way you want them to.
- Crisp, clean images with clear, concise narration.
- Entertaining and time saving. XLTeach is the future of Patient Education in Dentistry.

Call 800.328.2925 for a FREE network trial version

www.xldent.com XLTeach™ is a trademark of Professional Economics Bureau of America, Inc.

XLTeach™ is powered by ORASPHERE™ a trademark of New Boston Software, Inc.

PATIENT EDUCATION SOFTWARE